



Release Notes

Access WageEasy v8.1.1



For our Payroll Online customers

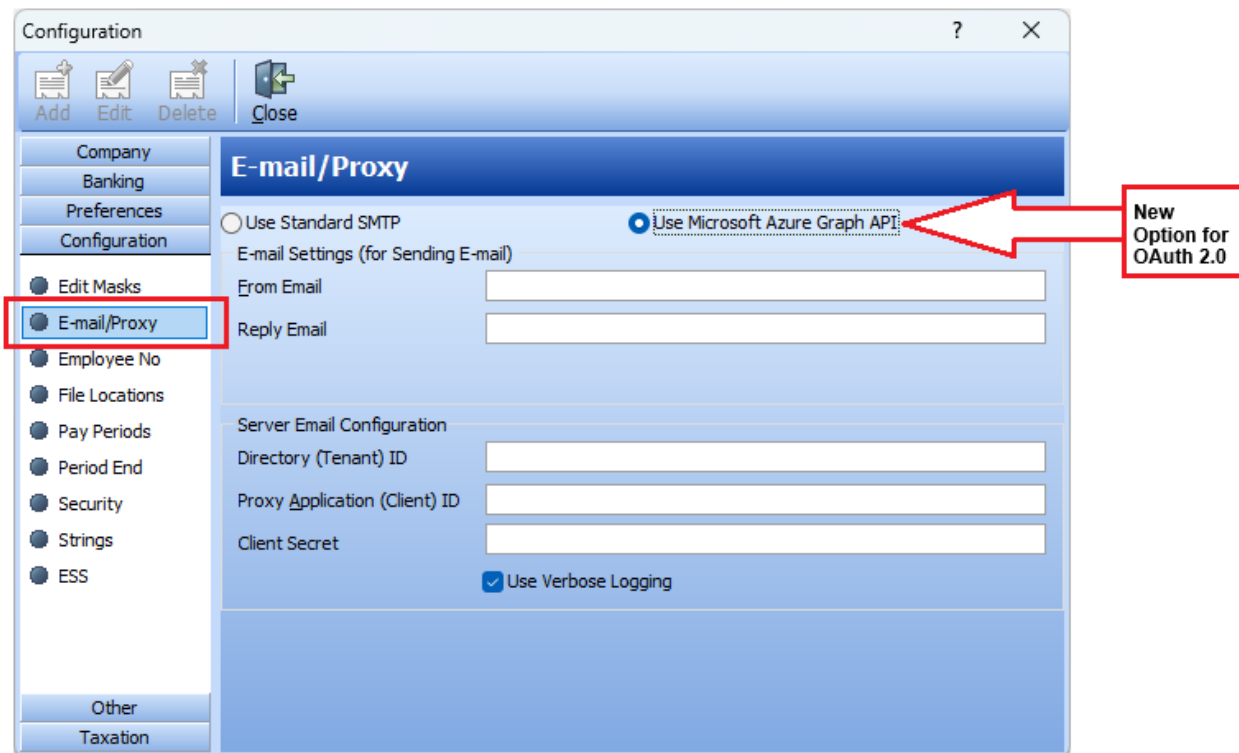
Installation and upgrade of Access WageEasy is managed as part of our service to you. You can disregard any comments or instructions that refer to downloading and installing software upgrades.

What's in this Release?

- OAuth 2.0 is now supported for email server authentication.
- Update to Email/Proxy setup for TLS
- Updates for Employee Onboarding feature
- AU STSL tax table updates available
- Removal of obsolete Lump Sum E \$1200 threshold messaging

Change to Email (SMTP) configuration to support OAuth 2.0

WageEasy now supports OAuth 2.0 as an email server authentication method. On upgrade to WageEasy v8.1.1.8793, two new radio buttons are added to the **Email/Proxy** tab of the Server Configuration Wizard (*File>Company Details> Configuration > Email/Proxy*):



Please note that you will require information from your email server to complete the Server Email Configuration. Your IT department or whoever manages your email server should be able to assist.



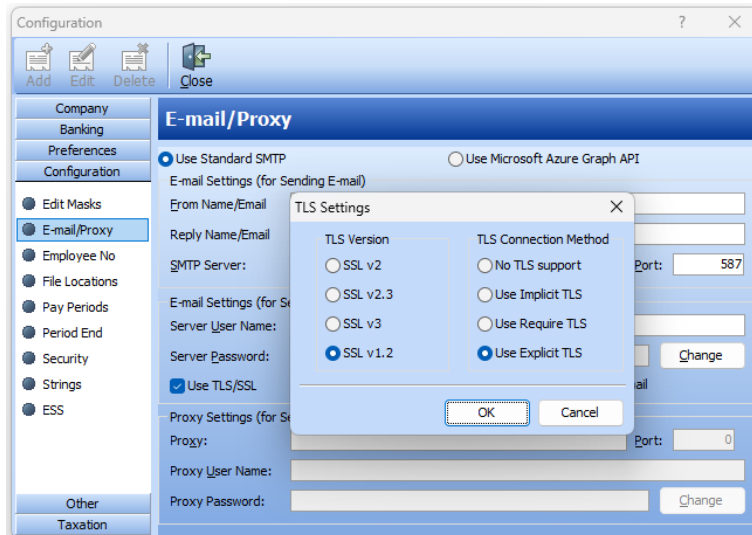
Do you currently use Exchange Online with Basic authentication as your email server and authentication method?

Microsoft has announced that [support for Basic authentication with Exchange Online servers is being withdrawn](#) in September 2025. Please ensure that you have configured a new authentication method, like OAuth 2.0, before then. If you do not, you may not be able to generate emails/email payslips from WageEasy.

Email/Proxy SMTP setup for TLS

Removal of the now deprecated TLS options for v1 and v1.1 for Standard SMTP Email/Proxy

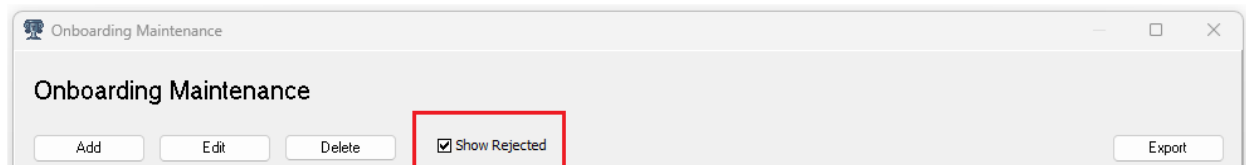
(File>Company Details> Configuration > Email/Proxy):



Updates for Employee Onboarding

Some enhancements have been made to Employee Onboarding feature in WageEasy:

- Allow for entry of Employee names with apostrophes and hyphens
- Allow for entry of Bank Names with apostrophes
- Removal of default setup to CBA bank
- Rejected/cancelled employee onboarding records can now be set to not show by removing the tick against 'Show Rejected'.



STSL tax table updates

The ATO has updated the STSL formula and tax tables (*Schedule 8 – Statement of formulas for calculating study and training support loans components (NAT3539)*). Employers must use the new rates for payments from 24 September 2025 onwards.

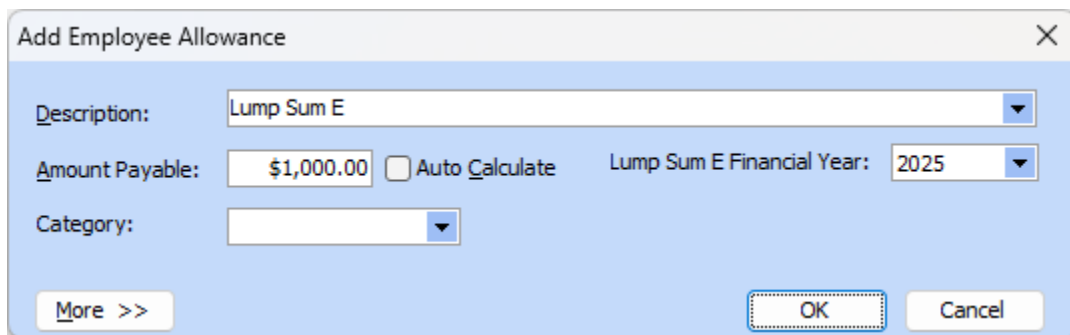
The Updated STSL Tax Table pdf file is available within this release and also available to download [HERE](#).

For Payroll Online – the updated STSL Tax Table pdl file will be available for loading with the upgrade completed on 24 September. The updated pdl file will be available on your (H) Home\Update PDL folder. Look for the '*Tax Tables_2025-26-09-24_UPDATE.Pdl*' file

For Desktop – the updated STSL Tax Table pdl file will be available for loading with the upgrade, with the PDL file available from the default installation location of *C:\Users\Public\Documents\Wage Easy Payroll\Association Data\Australia*. Look for the '*Tax Tables_2025-26-09-24_UPDATE.Pdl*' file

Lump Sum E

Update to **Lump Sum E** setup, removal of \$1200 threshold messaging.



Digital Assistant and Help Centre and Contact Details updates

The inline **Digital Assistant** is now pointing directly, without redirection to the [Access WageEasy Help Centre](#)



The **Access WageEasy Digital Assistant and Help Centre** are now in one place; visit [HERE](#) The new WageEasy Help Centre has smarter search and navigation, sleek user-friendly design, and quick access to resources.

Read more about how to Navigate the new Help Centre [HERE](#) and the Digital Assistant [HERE](#) to get answers to your questions faster.

Update to Access WageEasy Contact Details, with links to Licensing, Website and Customer Support portal and phone numbers

(Help > WageEasy Payroll Help > Contacts > Contact Details)

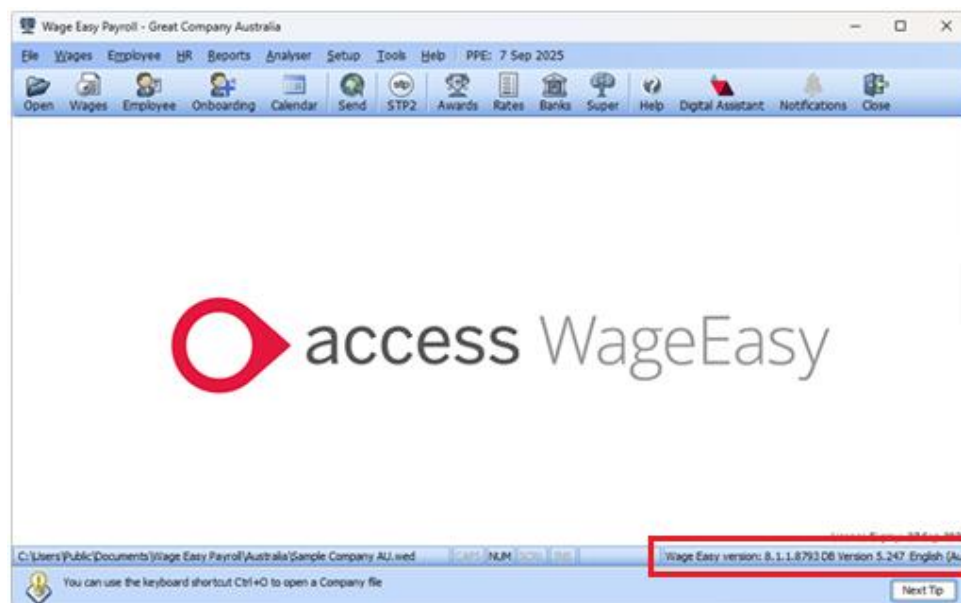
Contact Details	
How to Contact Us	
<u>Address</u>	WAGE EASY PAYROLL Level 11 Zenith Tower B 821 Pacific Hwy Chatswood NSW 2067 Australia
<u>Email (Licensing)</u>	WageEasy.Licensing@theaccessgroup.com
<u>Website</u>	www.theaccessgroup.com/en-au/products/wageeasy/
<u>Customer Support</u>	https://accessgroup.my.site.com/Support/s/login/
<u>Phone (Support)</u>	1300 WAGE EASY (1300 924 332) in Australia + (613) 9947 9200 from any other country



After you Upgrade

After the upgrade is installed, you should check that the correct software and database versions are displayed. If the latest version numbers are not as displayed below, Access WageEasy may not have been successfully upgraded.

To check the version of Access WageEasy



The version number is displayed on the bottom right-hand corner of the main Access WageEasy screen.

Your new database version number after the upgrade will be **8.1.1.8793**



After you have upgraded and opened your database, you can also check the version number by going to *Help > About Wage Easy Payroll*.

