

Release Notes

Micropay Evo Version 9.5 SP1

Contents

Introduction.....	1
What's in the Micropay Evo 9.5 SP1 release?	3
After you upgrade	13






Introduction

The main focus of this release is **Australian end of financial year changes**, the **introduction of payday super** and new features to support **Member Verification Requests (MVR)**, as required by SuperStream 3.0.

The highlights include:


- **Australian tax changes** for the *2026/2027 Financial Year* (see page 3).
- Changes for **payday super** (see page 4), including:
 - SGL parameters tab changes can no longer be edited
 - Quarterly Contribution cap is replaced with annual Maximum Contribution cap
 - References to Ordinary Time Earnings/OTE are replaced with Qualifying Earnings/QE
- Changes and fixes related **Beam Super Clearing** (see page 5)
- New functionality to support **Member Verification Requests** (see page 9), including:
 - Automatically sending **Member Verification Requests (MVRs)** for employees using non-employer default funds, and their fund configuration or member details change
 - New MVR verification fields and options in employee Superannuation Funds
 - A new Member Verification Request window to display MVRs sent within a date range.

For more information about these and other release items, refer to *What's in this Micropay Evo release?* (see page 3)

Key	
	The item applies to all country payroll databases.
	The item applies to Australian payroll databases.
	The item applies to New Zealand payroll databases.
	The item applies to Other country payroll databases.
	The item applies to a change for STP2. STP2 changes affect Australian payroll only.

For our Payroll Online customers

Please note that installation and upgrade of MicrOpay Evo are managed as part of our service to you. You can disregard any comments or instructions that refer to downloading and installing software upgrades.



Before updating your MicrOpay Evo software, both the **Payroll** and the **Common** database **must** be backed up. More information about database backup is available in the Knowledge Base article [Backup and Restore](#).

What's in the MicrOpay Evo 9.5 SP1 release?

Australian EOFY Changes 2026/2027



Please note that the listed tax changes are installed on upgrade to MicrOpay Evo 9.5 SP1 but do not take effect until Change Tax Year is run to roll the payroll database over into the 2026/2027 tax year.

- **2026/2027 Rate and Threshold Changes**

This release contains the following changes for the Australian 2026/2027 financial year:

In Payroll > Maintenance > Tax > Tax Scales

- **Marginal rate for second lowest bracket reduced**

The marginal rate for the \$18 201 - \$45 000 income bracket is reduced from 16% to 15%. MicrOpay Tax scales *01 to 06* and *11 to 13* are updated accordingly.

- **STSL Tax Scales 01 and 02 updated**

Updated rates are applied to the Study and Training Support Loan (STSL) Tax Scales 01 (Tax-Free Threshold Claimed) and 02 (No Tax-Free Threshold Claimed).

In Payroll > Maintenance > Tax > Tax Parameters

- **Component D ETP caps**

The **Initial Tax Free Value** increases from \$13 100 to **\$13 598**. The **Annual Tax Free Value** increases from \$6552 to **\$6801**.

The **ETP Lower Cap Amount** increases from \$260 000 to **\$270 000**.

In Payroll > Maintenance > General > General Parameters > SGL

- **The SGL quarterly cap changes to Maximum Contribution Cap**

On upgrade to 9.5 SP1, the **Contribution Cap** field is renamed **Maximum Contribution Cap** but the value is unchanged. When the tax year is changed, the quarterly value is updated with the annual Maximum Contribution Cap value of **\$270 830**, in compliance with payday super requirements. Additionally, the **SGL Parameters** are disabled for editing.

SGL Parameters	
Minimum Monthly Earnings	\$0.00
Minimum Eligible Age	18
Minimum Weekly Hours for Minimum Age	30
Maximum Contribution Cap	\$62,500.00
Statutory Super Guarantee (%)	12.00

SGL Parameters	
Minimum Monthly Earnings	\$0.00
Minimum Eligible Age	18
Minimum Weekly Hours for Minimum Age	30
Maximum Contribution Cap	\$270,830.00
Statutory Super Guarantee (%)	12.00



Superannuation (inc. Payday super and Beam Super Clearing)

Payday Super



Our Help Centre includes useful information about payday super, including *getting ready* and the switch from *ordinary time earnings to qualifying earnings*.

Changes related to payday super were introduced in MicrOpay version 9.5 as well as this version but are not enabled until Change Tax Year is run to finalise the 2025/2026 year.

These changes include:

- **Replacing references to *Ordinary Time Earnings* or *OTE* with *Qualifying Earnings* or *QE*.**

Qualifying Earnings replaces Ordinary Time Earnings as the earnings base for calculating employer super guarantee obligations. Fields and options previously labelled as *Ordinary Time Earnings* or *OTE* are updated to *Qualifying Earnings* or *QE*.

In *Payroll > Maintenance*:

- *Additions/Deductions > STP Reporting* tab
- *Pay Components*
- *Leave > Leave Reasons > STP Reporting* tab

Also, *STP OTE* is updated to *STP QE* in the **Customise Grid Columns** list for Maintenance grids, e.g. Additions and Deductions, Leave Reasons etc.

In *Payroll > Transactions > Processing*

- Lump Sum E amounts processed in a (Standard) Back Pay are split by component type and categorised as QE or non-QE for SGL calculation and STP Reporting. Please note that the split values can be viewed in the STP YTD report, they are not displayed in the Back Pay transaction window.

In *Payroll > Transactions > Import and Export*

- STP Reporting (Pay Events and Pay Event Details)
- STP Update and STP Adjustment, when selected for the 2026/2027 financial year or later. For prior years, *OTE* is still displayed.

In *Payroll > Reports*:

- *Transactions > Pay Event Review*
- *EOY > STP YTD Report*.

- **Super Guarantee Parameters updated**

The following changes are applied to *General Parameters > SGL* tab:

- The *SGL Parameters* fields are disabled.

- On upgrade to version 9.5 SP1, the **Contribution Cap** field is renamed **Maximum Contribution Cap**. Until the tax year is changed, this field displays the quarterly cap value for the 2025/2026 year but is updated with the annual maximum super contribution value for the 2026/2027 financial year.
- The *Superannuation Processing* section, including the **Remit Frequency** field, is removed.
- **Qualifying Earnings ticked by default when STP2 Reporting Group is Gross**
When the STP Phase 2 **Reporting Group** for an Addition/Deduction or Leave Reason is *Gross*, the **Qualifying Earnings (QE)** checkbox is ticked by default. For example:

The screenshot shows a software interface for 'Addition/Deduction Details' with a sub-tab for 'STP Reporting'. It is divided into two sections: 'STP Phase 1' and 'STP Phase 2'. In the 'STP Phase 1' section, there are dropdown menus for 'Payment Summary' (set to 'Include in Gross Salary & Wages'), 'Allowance ATO Type', and 'Allowance Description', and a checkbox for 'JobKeeper' which is currently unchecked. The 'STP Phase 2' section contains dropdown menus for 'Reporting Group' (set to 'Gross'), 'Reporting Subgroup', and 'Other Allowance Description', along with a checked checkbox for 'Qualifying Earnings (QE)'.

- **STP Reporting**
 - Calculation of QE values only considers SGL rules for an employee when **Apply SGL** is ticked for the Employer Contribution in their Superannuation Details. **Apply SGL** in the employee's super configuration will override **Apply SGL Exceptions** selected on the Employer Contribution (*Payroll > Maintenance > Superannuation > Employer Contribution*).
 - Qualifying Earnings of *0.00* are reported when no super is payable for employees under 18 who work 30 hours or fewer per week.
- **New IQ report displays contributions processed in current pay period**
A new standard IQ report, *IQB-UnpSup Unprocessed Super* is available from **Common > IQ**. The IQ can be run during the current pay period to check Employer and Employee contribution values processed for employees, before End of Pay is run and super is processed for the period.

Beam Super Clearing

The following errors are resolved:

- **Error message (<Batch entries>) are duplicates when submitting a batch**
This error occurred when an employee had both an active record and a terminated record for the same fund. Terminated funds were being incorrectly included in the batch Super Details grid but are now excluded.

- **Unable to validate or submit batch due to hidden characters included in employee data**

Non-printing characters included in data sent to Beam, e.g. a line break included at the end of an employee's Street caused a JSON error when trying to validate or submit the Super Clearing batch. When the JSON payload is compiled for submission, these non-printing characters are now removed. In the event that a hidden character is not removed, a new validation error *Invalid JSON Request* is displayed to assist troubleshooting.

- **Member Contribution response notifications not allocated correctly**

In some cases, Member Contribution responses sent from Beam, e.g. notification that an employee's super contribution has been refunded, could not be matched to the correct employee because they were displayed in Batch Notifications instead of Member Contribution Notifications.

The following enhancements are included:

- **Beam credentials re-issue check interval increased to ten months**

We've been working with Beam to improve the automatic re-issue of user credentials, to address issues where customers' Beam registration was incorrectly marked as expired. As part of this work, the expiry period has been increased from six to ten months. Please note that no user action is required to re-issue credentials, this is an automatic process.

- **Loader indicator now displayed on activation**

When a MicrOpay Administrator activates Super Clearing, a busy cursor, e.g. a spinner, is now displayed while the activation is in progress.

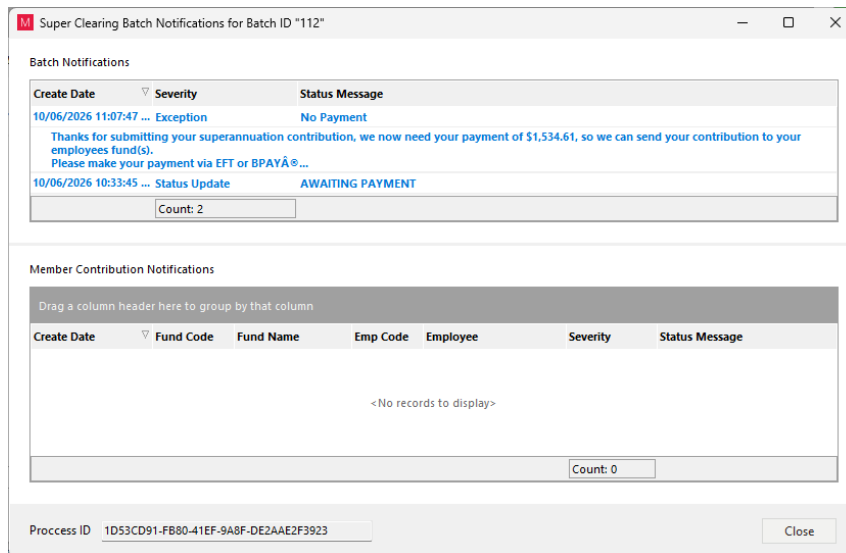
- **New Super Clearing Notification and Messages enhancements**

Changes have been made to the *Super Clearing Batches* window, the *Validation Messages* and the *Notifications* window to make unread messages and notifications easier to identify and prioritise:

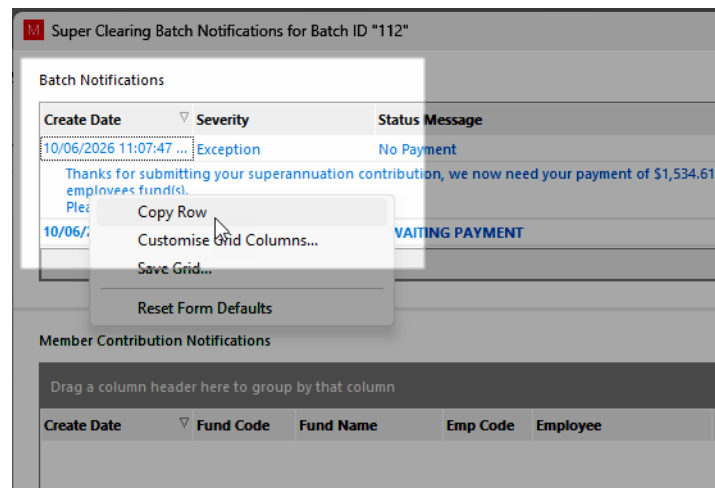
- In Super Clearing Batches, the **Notifications** column now shows the number of *New* (unread) notifications in brackets, after the total number of notifications received.

Select	Batch ID	Date Created	Process To Date	Payroll Company	Contributions	Employer Primary	Employer Additional	Employee Before Tax	Employee After Tax	Total Contribution	Messages	Notifications
<input type="checkbox"/>	112	10/06/2025	29/10/2025	PC - MicrOpay Holdings	1	1,534.61	0.00	0.00	0.00	1,534.61	1	2 (2 New)

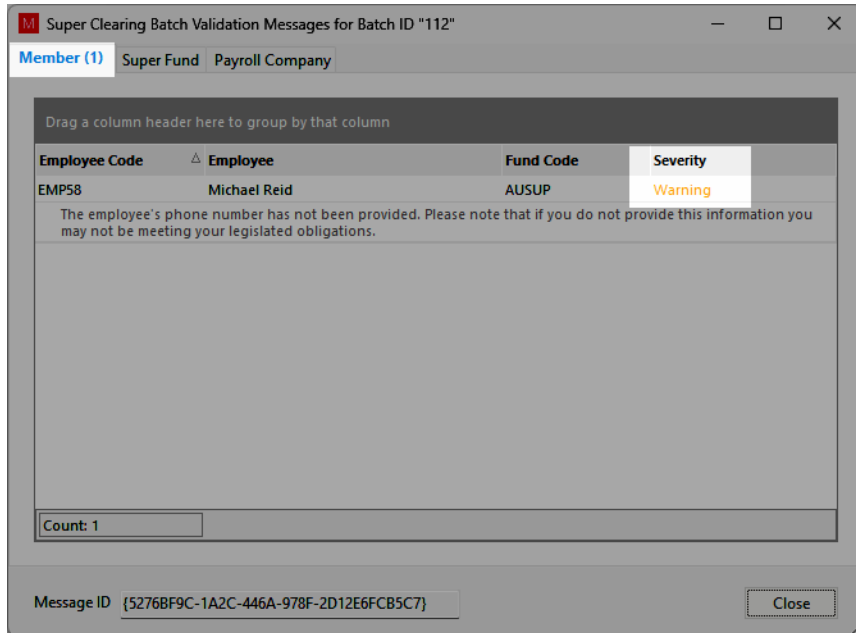
- In the **Batch Notifications** window, for both the Batch Notifications and Member Contribution Notifications grids:
 - The **Create Date** column is now displayed by default, with Notifications ordered by most recent Create Date.
 - Unread Notifications have bold formatting applied.



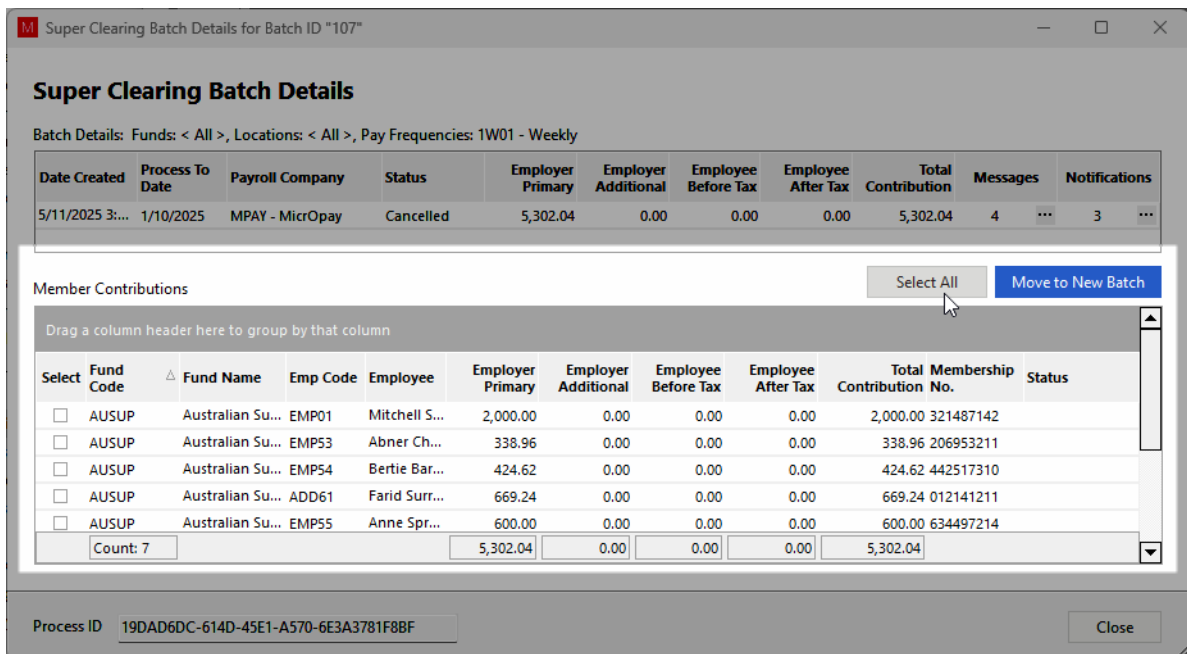
- Preview text displayed for read messages is now grey, to differentiate from unread messages.
- Users can now copy message text to the clipboard by right-clicking on the message and selecting the new **Copy Row** option.



- In the **Validation Messages** screen:
 - The tab headings of the **Member**, **Super Fund** and **Payroll Company** tabs are now bolded when there are unread messages.
 - Text in the **Severity** column is now colour-coded. Errors are red, warnings are orange and information-only messages are teal.



- Like Notifications, users can right-click a message and select **Copy Row** to copy message text to the clipboard.
- Select All option added to Member Contributions grid of cancelled batches**
A new **Select All/Unselect All** toggle button is added above the Member Contributions grid of cancelled super clearing batches. This enables records in the batch to be selected and easily moved to a new batch.



Member Verification Requests (MVR)

- **New features and functionality to enable Member Verification Requests (MVR) to be sent to Beam**

MicrOpay 9.5 SP1 now supports sending of MVRs for employees contributing to non-employer default funds, which are processed through Beam super clearing (non-default Beam funds). Updating an employee's super setup for non-default Beam funds automatically generates and sends an MVR to Beam, for verification with the relevant funds. For example, a new MVR is sent when:

- A new non-default Beam fund is added to an existing employee
- An employee's **Membership No** for their existing non-default Beam fund is changed
- A new employee, who is set up to contribute to a non-default Beam fund, is added.

The employee's verification status is updated when a response is received from Beam or if an error is encountered.



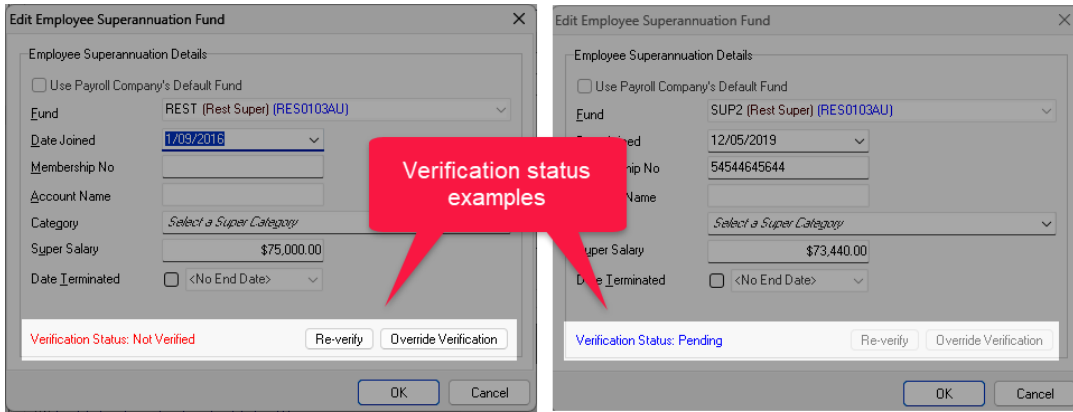
More information about MVR, including MVR statuses, errors and troubleshooting is available in our Help Centre article: [Member Verification Request \(MVR\) through Beam Super Clearing.](#)

Please note that:

- MicrOpay 9.5 SP1 sends MVRs for non-default Beam funds only. Employer default funds, SMSFs and non-default funds not processed through Beam are excluded.
- No setup is required to start using MVR. After upgrade to 9.5 SP1, verification requests are automatically sent when an applicable change is made.
- Employees who fail verification cannot be processed in a Beam Super Clearing batch. They must be removed from the batch until their member details can be verified.
- On upgrade, all existing employees actively contributing to non-default Beam funds are auto-verified. Auto-verified employees can be viewed in the new Member Verification Requests window (see below.)
- Once an MVR is sent, a response can take up to 24 hours.

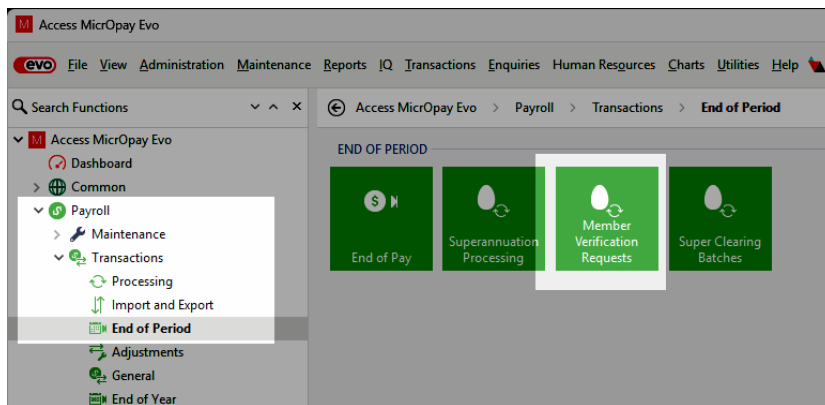
Changes to Employee Superannuation Fund

An employee's MVR status for a fund is now displayed in their Employee Superannuation Fund window along with new buttons, **Re-verify** and **Override Verification**. These buttons may be enabled or disabled, depending on the current verification status.



New Member Verification Requests Tile and Window

- Go to *Payroll > Transactions > End of Period* to click the **Member Verification Requests** tile and open the window.



- The window displays all MVRs sent within a date range. The default range is the last seven days but dates can be adjusted to display a different range. Click **Refresh** to load adjusted results.

Member Verification Requests

Re-send MVR Sent From 5/06/2026 To 12/06/2026 Refresh

Status ▼

Employee Code	Employee Name	Payroll Company	Fund Name	Member Number	MVR Sent	Expiry	MVOR Status	MVOR Received	Verified	MVOR Summary
ERR166 (Fund USI not found)										
EMP59	Nick DiBartolo	PC - MicrOpay	Netwealth Sup...		10/06/2026 11:06...		ERR166 (Fund USI not fo...	No		Fund USI not found
EMP50	Kathy Neuman	MPAY - MicrOpay	Netwealth Sup...	25141114	10/06/2026 10:56...		ERR166 (Fund USI not fo...	No		Fund USI not found
Timeout Verified										
EMP53	Abner Charles	MPAY - MicrOpay	Rest Super	54544645644	10/06/2026 2:46...		Timeout Verified		Yes	
Bypass (Fund Not Registered)										
EMP55	Anne Sprague	MPAY - MicrOpay	HESTA Super	5489489749844	10/06/2026 2:31...		Bypass (Fund Not Regist...		N/A	The fund is not certified t...

Close

- Requests are grouped by **Status**, e.g. Errored (by specific error code), *Pending*, *Verified*, *Rejected*.
- The **MVOR Status**, **MVOR Received** and **MVOR Summary** columns display information about whether a response has been received and the verification outcome. (*MVOR = Member Verification Outcome Response*).
- The **Upgrade Verified** group displays employees who were auto-verified on upgrade to MicrOpay 9.5 SP1.

Upgrade Verified							
EMP50	Kathy Neuman	MPAY - MicrOpay	Netwealth Sup...	4/06/2026 11:57:5...	Upgrade ...	Yes	Auto-verified during upgrade migration
EMP04	Sue APLEBY	PC - MicrOpay ...	Netwealth Sup...	4/06/2026 11:57:5...	Upgrade ...	Yes	Auto-verified during upgrade migration
Timeout Verified							
EMP53	Abner Charles	MPAY - MicrOpay	Rest Super	54544645644 10/06/2026 2:46:4...	Timeout V...	Yes	

- The **Re-send** button above the grid allows certain requests, based on their current status, to be re-submitted. If a record can be re-submitted, **Re-send** is enabled when the record is selected. Please wait 24 hours before attempting to re-send, to allow adequate time for a response.

Other Superannuation Changes and Fixes

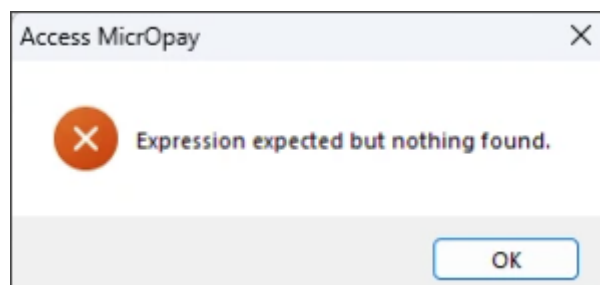
- **SGL cap calculation excludes non-SG employer contributions**

This release includes the fix for an issue reported following release of MicrOpay 9.5 B2, where non-SG employer contributions, e.g. Reportable Employer Super Contributions (RESC), were incorrectly included when calculating super paid-to-date, to compare to the SG cap.

STP 2 Reporting

- **Error when printing STP Reporting events corrected**

An issue that caused the following error message when attempting to print the details of an STP pay event or update event is resolved.



This occurred when the pay event or update event included an employee with the **VOL Income Type** and *Non-employee* **ATO Defined Special Category** defined in their Tax Details.

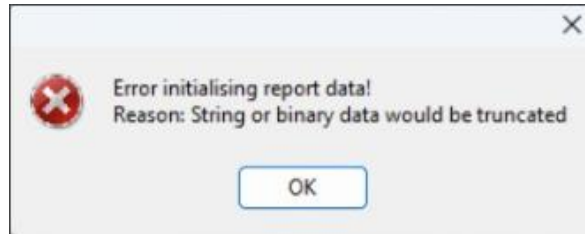
- **WHM or IAA Lump Sum E now displayed in STP YTD Report**

The STP YTD Report now displays Lump Sum E amounts for employees with an **Income Type** of *WHM (Working Holiday Makers)* or *IAA (Inbound Assignee to Australia)*.

AU Reports

- **Error when producing Pay Advices resolved**

An issue causing the following error when producing Pay Advices is resolved:



This could happen when the combined length of an employee's Super Fund name and Contribution, used in stored procedures to produce pay advices, exceeded the internal character limit so were truncated. The character length limit has been increased.

NZ Maintenance

Tax

- **New Zealand and Other country tax scales cleared after 9.5 B2 upgrade**

MicrOpay 9.5 SP1 corrects an issue reported after upgrade to MicrOpay 9.5 B2, which caused tax scales in New Zealand and Other country payroll databases to be cleared, impacting pay processing.

Please note that affected customers were provided with a script to correct the issue when it occurred.

After you upgrade

For our Payroll Online customers

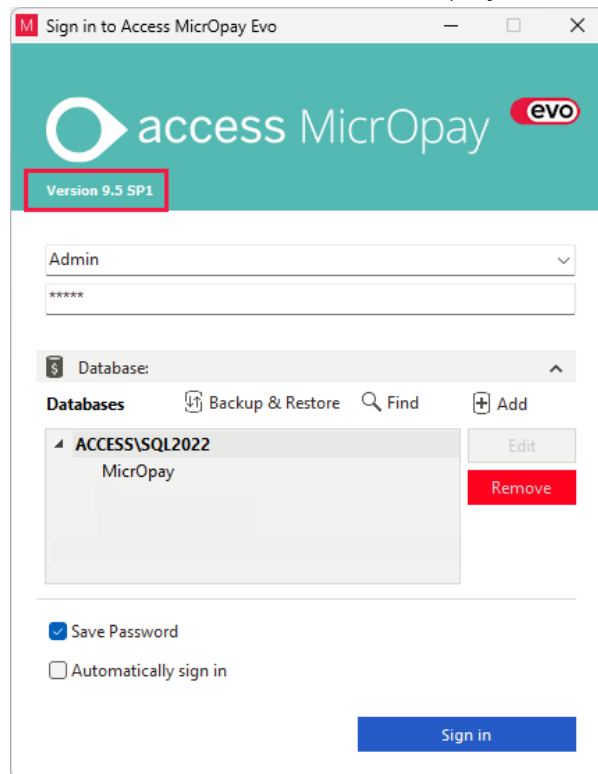
Please note that upgrade of MicrOpay Evo is managed as part of our service to you. You can disregard any comments or instructions that refer to downloading and installing software upgrades.

After the upgrade is installed, you should check that the correct software and database versions are displayed. If the latest version numbers are not displayed, MicrOpay Evo may not have been successfully upgraded.

To check the MicrOpay Evo software version

In the sign in window:

- After the upgrade is installed the version number displayed should be **9.5 SP1**

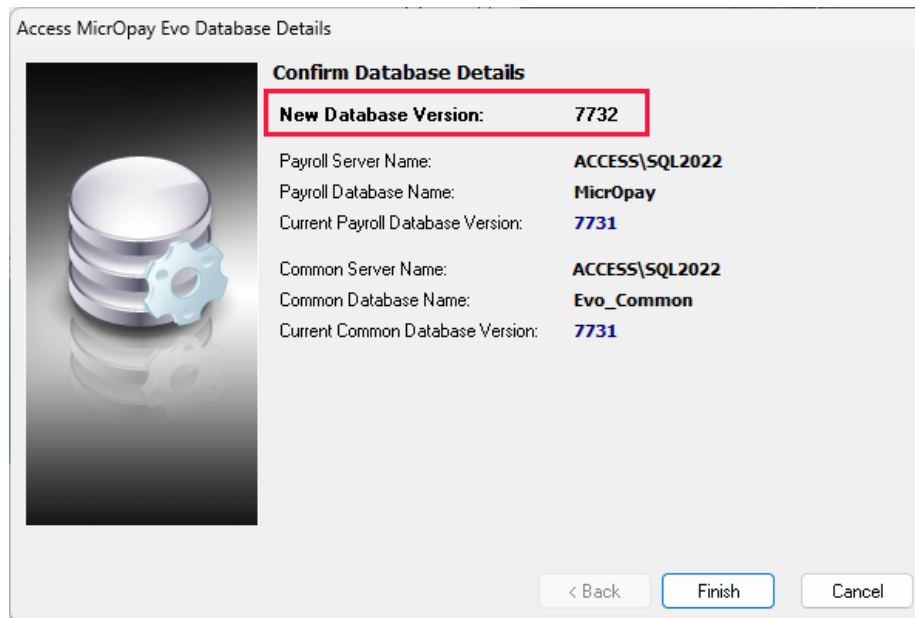


After you have signed in, you can check the version number by going to **Help > About**.

To check the Micropay Evo database version

Your new database version number after the upgrade should be **7732**

The first time you log in to Micropay Evo after installing the upgrade, the payroll and common databases will be updated. You can check the new database version from the Confirm Database Details window.



Ensure you click **Finish** to proceed with the database update.