

Release Notes

MicrOpay Evo Version 9.4 SP1

Contents

Introduction.....	1
What's in the MicrOpay Evo 9.4 SP1 release?	3
After you upgrade	11






Introduction

The highlights of this release include:

- **Australian tax changes** for the *2025/2026 Financial Year* (see page 3).
- Other *EOY changes* (see page 4):
 - The **Super Guarantee Percentage** increases to 12%.
 - The **Lump Sum E \$1200 threshold** is removed.
- **New STP2 dataviews** for *Access Evo* (see page 5).
- **OAuth 2.0 is now supported** for *email server authentication* (see page 9).

Please note: If you currently use Basic authentication with Microsoft Exchange Online you may need to update your email server configuration before September 2025. Please review the above item for more information.

For more information about these and other release items, refer to *What's in this MicrOpay Evo release?* (see page 3)

Key	
	The item applies to all country payroll databases.
	The item applies to Australian payroll databases.
	The item applies to New Zealand payroll databases.
	The item applies to Other country payroll databases.
	The item applies to a change for STP2. STP2 changes affect Australian payroll only.

For our Payroll Online customers

Please note that installation and upgrade of MicrOpay Evo are managed as part of our service to you. You can disregard any comments or instructions that refer to downloading and installing software upgrades.



Before updating your MicrOpay Evo software, both the **Payroll** and the **Common** database **must** be backed up. More information about database backup is available in the Knowledge Base article:

[How do I Backup and Restore?](#)

What's in the MicrOpay Evo 9.4 SP1 release?

Australian Tax Changes 2025/2026



Please note that the listed tax changes are installed on upgrade to MicrOpay Evo 9.4 SP1 but do not take effect until Change Tax Year is run to roll the payroll database over into the 2025/2026 tax year.

AU

- **2025 Rate and Threshold Changes**

This release contains the following changes for the Australian 2025/2026 financial year:

In Payroll > Maintenance > Tax > Tax Scales > STSL Scales

- **STSL Tax Scales 01 and 02 updated**

Updated rates are applied to the Study and Training Support Loan (STSL) Tax Scales 01 (*Tax-Free Threshold Claimed*) and 02 (*No Tax-Free Threshold Claimed*).

In Payroll > Maintenance > Tax > Tax Parameters

- Component D ETP caps

The **Initial Tax Free Value** increases from \$12 524 to **\$13 100**; and the **Annual Tax Free Value** increases from \$6264 to **\$6552**.

The **ETP Lower Cap Amount** increases from \$245 000 to **\$260 000**.

In Payroll > Maintenance > General > General Parameters > SGL

- **SGL quarterly Contribution Cap**

The SGL quarterly Contribution Cap decreases from \$65 070 to **\$62 500**.

- **Statutory Super Guarantee Percentage**

The Statutory Super Guarantee percentage increases from 11.5% to **12%**.



The **Statutory Super Guarantee** field is used by the *SGL Percentage Change* feature to automatically create new, 12% employer contributions and link them to employees. *SGL Percentage Change* is available in the Change Tax Year window, in MicrOpay Evo 9.4 SP1 databases. For more information, refer to the following item, *Other EOY Changes*.

Other EOY Changes

AU

- **SGL Percentage Change feature available in Change Tax Year window**

On upgrade to MicrOpay Evo version 9.4 SP1, the SGL Percentage Change feature is displayed in **Payroll > Transactions > End of Year > Change Tax Year** so it can be used to automate creation of new 12% SG employer super contributions and attach them to active employees.

Some points about SGL Percentage Change:

- To use the feature, you must upgrade to 9.4 SP1 before running Change Tax Year.
- You can Change Tax Year without using SGL Percentage Change.
 - Untick the Create checkbox for each record in the SGL Percentage Change grid, before running Change Tax Year.
- If you don't use SGL Percentage Change when changing the tax year, you cannot use it later.
 - Once MicrOpay Evo is rolled over into the 2025/2026 financial year, SGL Percentage Change is hidden in the Change Tax Year window.
 - New, 12% SG employer contributions must be manually created and attached to employees, before payroll processing commences in the new year.



For more information about using SGL Percentage Change, refer to our Knowledge Base article:

[How do I update the Compulsory Employer Superannuation Contribution Percentage?](#)

AU

- **\$1200 Lump Sum E threshold removed**

From 1 July 2025, the \$1200 threshold is removed for Lump Sum E payments. Once the tax year is changed to 2025/2026 in a MicrOpay Evo 9.4 SP1 database, *all* back pays accrued on payments made more than 12 months before the date of the back pay will be treated as Lump Sum E, regardless of amount. See also the related items under *Employee Maintenance* (see page 6), *Transactions and Processing* (see page 7) and *STP2 Reporting* (see page 5).

Access Evo

ALL

- **New STP2 dataviews available**

The following new STP2 dataviews have been added to MicrOpay Evo:

- **STP2 Employee Transactions**

Includes transactions with an STP2 reporting group, for all employees in all periods.

- **STP2 Pay Event Break Down**

Includes a breakdown of STP2 Pay Event details, for all employees in all pay periods.

The upcoming Access Evo release, scheduled for 23 June 2025, will include new Dashboards based on these dataviews.

STP Reporting

STP
2

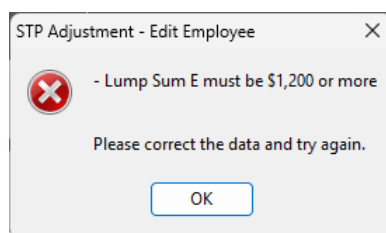
- **Changes related to removal of \$1200 Lump Sum E Threshold**

- **STP Pay Events: Lump Sum E amounts less than \$1200 now reported as Lump Sum E**

Previously, Lump Sum E amounts less than \$1200 were included in employees' *Gross Taxable*. From 1 July 2025, these amounts will be reported as *Lump Sum E*.

- **STP Adjustment: Below Lump Sum E threshold message removed**

The following message is no longer displayed when a Lump Sum E amount less than \$1200 is entered for an employee in STP Adjustment.



See also the related items under *Other EOY Changes* (see page 4), *Employee Maintenance* (see page 6), and *Transactions and Processing* (see page 7).

STP
2

- **Typo corrected in STP2 Pay Event Details column heading**

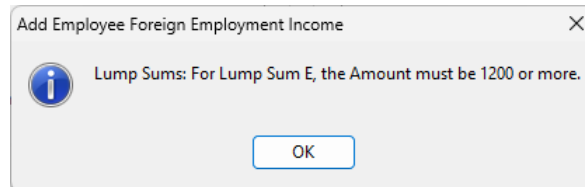
The **Bonus and Commission** column heading in the Pay Event Details window has been updated to **Bonus and Commissions**.

Employee Maintenance

AU

- **Employee Foreign Employment Income: Below Lump Sum E threshold message removed**

Entering a Lump Sum E amount less than \$1200 in an employee's *Tax Details > Foreign Employment Income* values no longer causes the following message to be displayed.

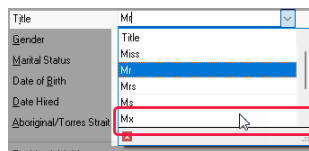


See also the related items under *Other EOY Changes* (see page 4), *Transactions and Processing* (see page 7) and *STP2 Reporting* (see page 5)

ALL

- **Mx option available in Title field**

The **Title** field dropdown list now includes the option, *Mx*.



This option can be selected in the **Title** field in:

- *Personal Details* in the employee record.
- The *TFN Declaration 1/2 page*, when either adding a new employee or editing an existing employee using the Add/Edit Employee Wizard.

This change also ensures that new employees or employee changes sent from a third party can be implemented, if they include *Mx* as the employee's title.

Transactions and Processing

AU

- **Back Pay transaction window updated for Lump Sum E \$1200 threshold changes**

After the tax year is changed to 2025/2026, the Standard Back Pay transaction no longer displays fields and messages related to the Lump sum E \$1200 threshold when a Lump Sum E amount less than the threshold amount is calculated.

In MicrOpay Evo 9.4 SP1, 2024/2025 tax year

In MicrOpay Evo 9.4 SP1, 2025/2026 tax year

Back Pay Components

Calculation Details Rates Transaction Details

Calculation Details

Start Date 11/06/2022 End Date 30/06/2023 Pay Periods 8

Percentage 4.00 % Normal Earnings \$1,412.31

Lump Sum E Details (11/06/2022 - 30/06/2023)

Lump Sum E \$451.92 ☐ Override Financial Year 2022

If the value of the back payment accrued more than 12 months before the date of payment, displayed in the Lump Sum E field, is less than \$1,200.00 it should be reported as Gross Payments in STP, not Lump Sum E.

Tick the checkbox below to report the value as Lump Sum E.

☐ Report as Lump Sum E

Calculate

Back Pay Components

Calculation Details Rates Transaction Details

Calculation Details

Start Date 11/06/2022 End Date 30/06/2023 Pay Periods 8

Percentage 4.00 % Normal Earnings \$1,412.31

Lump Sum E Details (11/06/2022 - 30/06/2023)

Lump Sum E \$451.92 ☐ Override Financial Year 2022

Calculate

See also the related items under *Other EOY Changes* (see page 4), *Employee Maintenance* (see page 6), and *STP2 Reporting* (see page 5)

ALL

- **Termination transaction now includes Long Service Leave hours calculated in same pay period**

When a pay transaction is processed in the same pay period as a termination transaction and the employee has a Long Service Leave class based on hours worked, the termination now includes the long service leave hours calculated in that pay period.

Calculations (MicrOpay Evo Common)

ALL

- **Improved validation when system Variables updated**

When a system Variable is added, MicrOpay Evo now validates the ID and Description of Variables currently in use to ensure that they are not affected. This corrects an issue in version 9.4, where a Formula failed to calculate because a new system Variable had been allocated the ID of an existing Variable used by the Formula.

Reports (including Pay Advices, IQ Reports and Report Writer views)

ALL

- **Issue that allowed Pay Advice production to be interrupted now corrected**

An issue that caused the **Produce** and **Preview** buttons in the Pay Advice Report window to be enabled and selected during pay advices production is corrected. Normally, these buttons are disabled when the pay advices are being produced. Clicking these buttons while pay advices were already in progress interrupted the current process could cause inconsistent pay advice output.

Please note this issue only occurred in very limited circumstances, when pay advices were produced with **Delivery Method** set to *Employee Default*, for multiple employees with a mix of different Delivery Methods AND emailing of pay advices did not complete correctly. Now, if this scenario occurs, **Produce** and **Preview** will remain disabled.

ALL

- **Blank descriptions for Termination Components in Payroll Report addressed**

The correct descriptions for termination components *Term ETP (Super) - Tax Free (Pre July 83)* and/or *Term ETP (Super) - Taxable (Post June 83)*, are now displayed in the Payroll Report. This addresses an issue where the *Hours* and *Amount* were displayed correctly but the component descriptions were blank.

ALL

- **Report Writer Leave view optimised**

Report Writer Leave view _ipvRBEmpLeave has been rewritten for better performance.

Superannuation

AU

- **SwimEC checkbox removed from Fund record**

The Superannuation Fund record has been updated to remove the redundant **SwimEC** checkbox. There have also been some minor layout changes to the Fund record.

Before upgrade to MicrOpay Evo 9.4 SP1

After upgrade to MicrOpay Evo 9.4 SP1

General

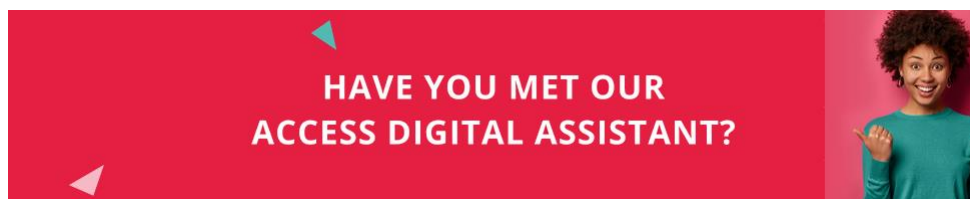
ALL

- **We've enhanced The Digital Assistant**

The Digital Assistant is enhanced:

- To use Generative AI when you **Ask a MicrOpay question**.
- With updated, curated article collections for specific topics including an **Australia - EOFY** collection, to ensure a smooth transition to the new financial year.

Receive answers to your questions faster than ever. [Click Here to Learn More](#)

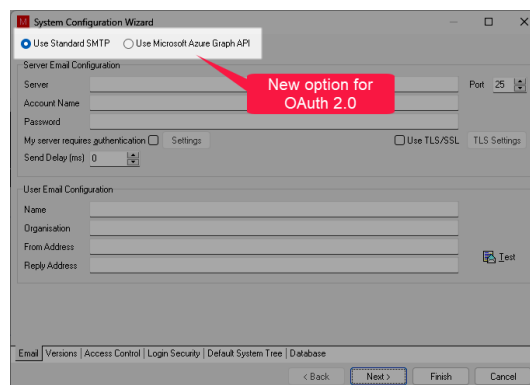


System, Database and Setup

ALL

- **Change to Email (SMTP) configuration to support OAuth 2.0**

MicrOpay Evo now supports OAuth 2.0 as an email server authentication method. On upgrade to MicrOpay Evo 9.4 SP1 two new radio buttons are added to the **Email** tab of the Server Configuration Wizard (*MicrOpay Evo Administration > System Configuration > System Wizard*):

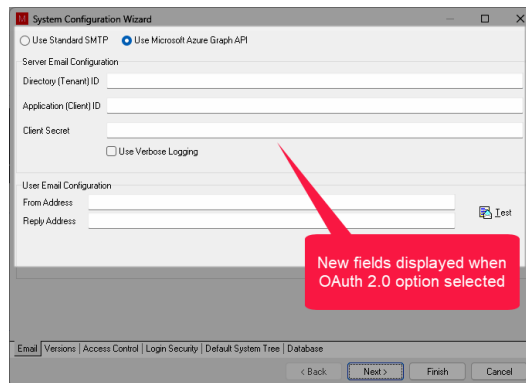


- **Use Standard SMTP**

This is the existing, i.e. pre-upgrade, configuration option and is selected by default.

- **Use Microsoft Azure Graph API**

This is the new option to use with OAuth 2.0. When selected, the **Email** tab is updated with fields required for OAuth configuration.



The screenshot shows the 'System Configuration Wizard' window. At the top, there are two radio buttons: 'Use Standard SMTP' (unselected) and 'Use Microsoft Azure Graph API' (selected). Below this, the 'Server Email Configuration' section includes fields for 'Directory (Tenant) ID', 'Application (Client) ID', and 'Client Secret'. There is also a checkbox for 'Use Verbose Logging'. The 'User Email Configuration' section includes fields for 'From Address' and 'Reply Address', along with a 'Test' button. A red callout box with a pointer to the 'User Email Configuration' section contains the text: 'New fields displayed when OAuth 2.0 option selected'. At the bottom, there are tabs for 'Email', 'Versions', 'Access Control', 'Login Security', 'Default System Tree', and 'Database'. Navigation buttons at the bottom right include '< Back', 'Next >', 'Finish', and 'Cancel'.

Please note that you will require information from your email server to complete the Server Email Configuration. Your IT department or whoever manages your email server should be able to assist.



Do you currently use Exchange Online with Basic authentication as your email server and authentication method?

Microsoft has announced that [support for Basic authentication with Exchange Online servers is being withdrawn](#) in September 2025. Please ensure that you have configured a new authentication method, like OAuth 2.0, before then. If you do not, you will not be able to generate emails, e.g. send email pay advices, from MicrOpay Evo.

After you upgrade

For our Payroll Online customers

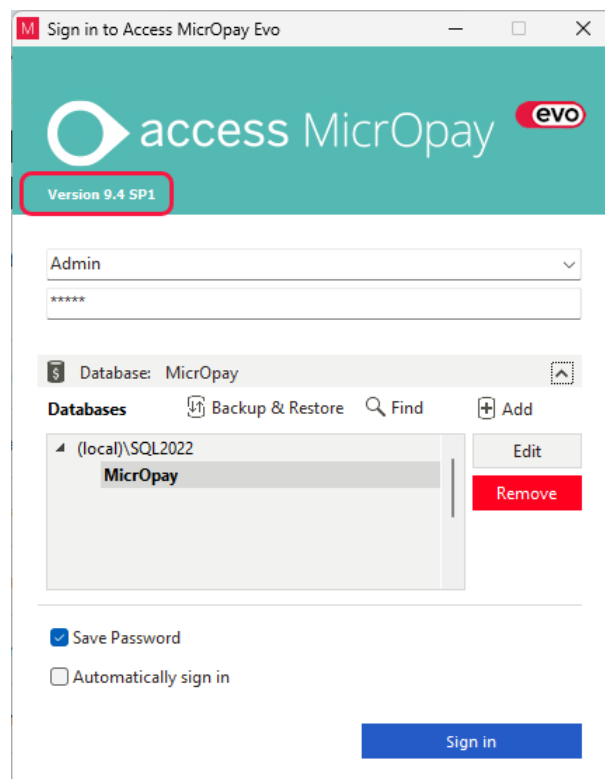
Please note that upgrade of MicrOpay Evo is managed as part of our service to you. You can disregard any comments or instructions that refer to downloading and installing software upgrades.

After the upgrade is installed, you should check that the correct software and database versions are displayed. If the latest version numbers are not displayed, MicrOpay Evo may not have been successfully upgraded.

To check the MicrOpay Evo software version

In the sign in window:

- After the upgrade is installed the version number displayed should be **9.4 SP1**.
- The product logo displayed in the sign in window changes from *Access MicrOpay* to *Access MicrOpay Evo*.

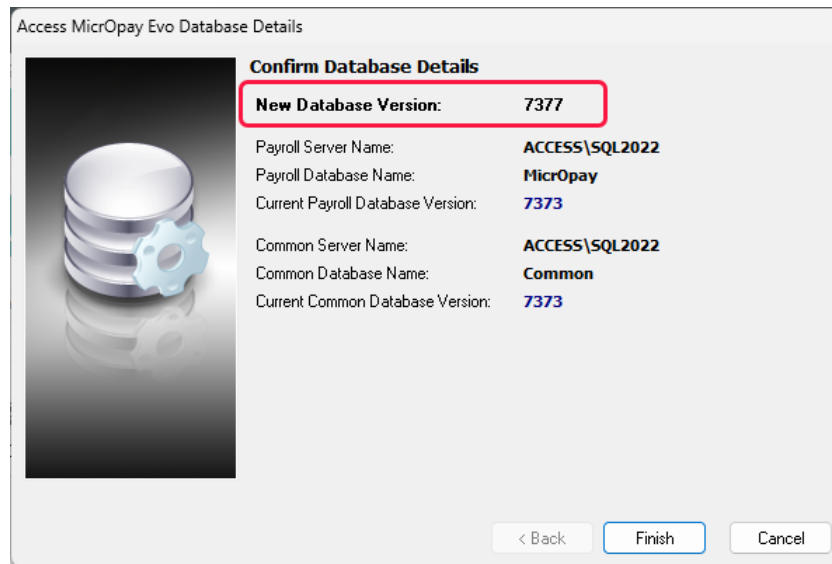


After you have signed in, you can check the version number by going to **Help > About**.

To check the Micropay Evo database version

Your new database version number after the upgrade should be **7377**.

The first time you log in to Micropay Evo after installing the upgrade, the payroll and common databases will be updated. You can check the new database version from the Confirm Database Details window.



Ensure you click **Finish** to proceed with the database update.