

# Release Notes

## MicrOpay Evo Version 9.4 SP2

### Contents

<b>Introduction.....</b>	<b>1</b>
<b>What's in the MicrOpay Evo 9.4 SP2 release? .....</b>	<b>3</b>
<b>After you upgrade .....</b>	<b>8</b>

### Introduction

The main focus of this release is the introduction of new Super Clearing functionality. We have partnered with Beam to provide a new and simpler super clearing option than MicrOpay's current clearing house solution, Express Super. We are also getting ready for the introduction of PayDay Super and its increased super payment and reporting requirements.

On upgrade to MicrOpay Evo 9.4 SP2, the Super Clearing-related changes that customers will see are minimal.

- A new **Super Clearing Setup** tile in the *MicrOpay Evo Administration module* (see page 3).
- A new Beam system *Creditor record* (see page 4).



Most changes related to Super Clearing are hidden until Super Clearing is activated from the Super Clearing Setup tile. Before Super Clearing can be activated, there is a go-live process that customers must complete. Please speak to your Account Manager to learn more about getting started with Super Clearing.






#### **What's Happening with Express Super?**

Express Super is approaching its end of life but is still available to use. We are contacting customers with Express Super to work with them on the switch to Super Clearing.

### Other highlights of this release:

- A new layout for *STSL Tax scales* (see page 4), in preparation for updates to STSL rates.
- Updates to several database views used by *Access Evo* (see page 5).
- New warning messages when restoring from backup after significant payroll processing steps.
- Better handling of *Back Pay* (see page 7) when there is no Lump Sum E component. This corrects an issue that caused *STP2 events to fail validation* (see page 7).
- The new *Access MicrOpay Help Centre* (see page 7) is now available, where you can find answers faster to your questions.

For more information about these and other release items, refer to *What's in this MicrOpay Evo release?* (see page 3)

Key	
	The item applies to all country payroll databases.
	The item applies to Australian payroll databases.
	The item applies to New Zealand payroll databases.
	The item applies to Other country payroll databases.
	The item applies to a change for STP2. STP2 changes affect Australian payroll only.

### For our Payroll Online customers

Please note that installation and upgrade of MicrOpay Evo are managed as part of our service to you. You can disregard any comments or instructions that refer to downloading and installing software upgrades.



Before updating your MicrOpay Evo software, both the **Payroll** and the **Common** database **must** be backed up. More information about database backup is available in our [new Help Centre](#).

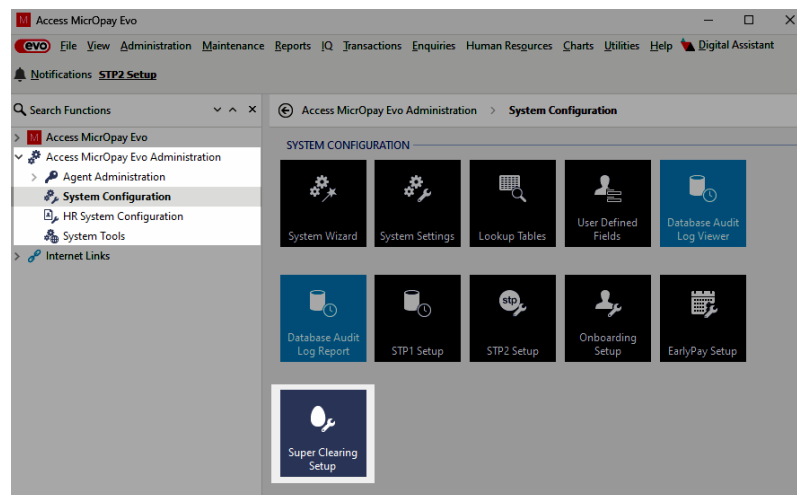
# What's in the MicroPay Evo 9.4 SP2 release?

AU

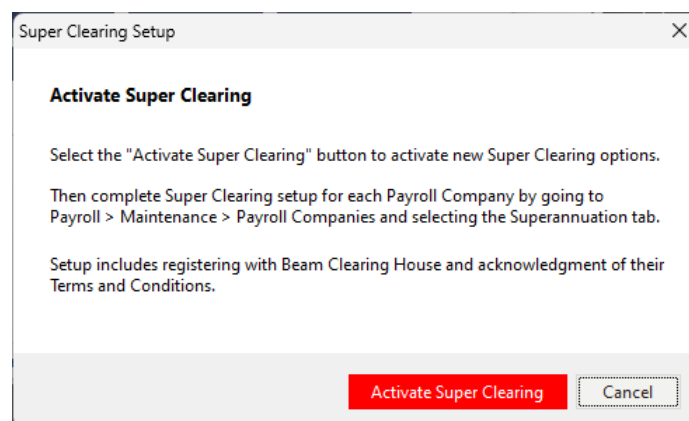
## System Configuration

- **New Super Clearing Setup Tile**

A new **Super Clearing Setup** tile is added *Payroll > MicroPay Evo Administration > System Configuration* on upgrade to 9.4 SP2. This tile is used to activate Super Clearing.

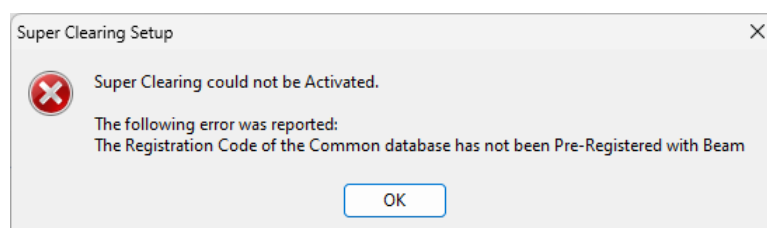


The following message is displayed when Super Clearing is clicked:

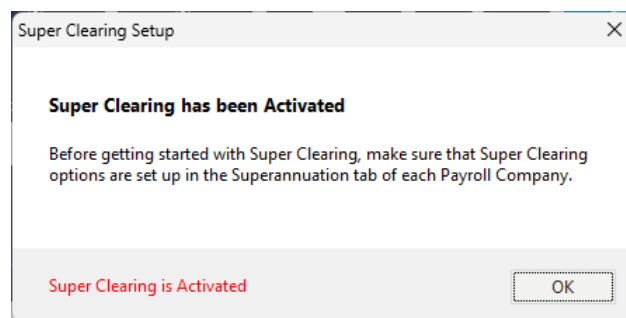


Please note that:

- The Company that is licensed to use MicroPay must be pre-registered with Beam to activate Super Clearing. Pre-registration is one the steps we complete when we receive a customer's request to use Super Clearing.
- If you click **Activate Super Clearing** but are not pre-registered, the following message is displayed:



If you are pre-registered and select **Activate Super Clearing**, the following message is displayed.



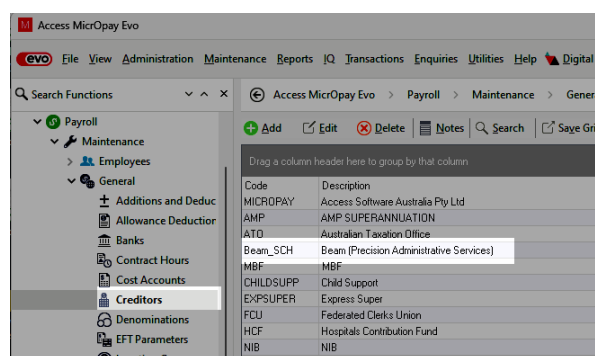
If you would like more information about getting started with Super Clearing, speak to your Access Account Manager.



## Creditors Maintenance

- **New Beam Creditor for Super Clearing**

A new Creditor record, *Beam\_SCH*, is added to **Payroll > Maintenance > General > Creditors**. This is a system record, that is used only for EFT payments related to Super Clearing processing, so the **Creditor Details** cannot be changed.



## Tax

- **Update to STSL tax scales layout**

The STSL tax scales (**Payroll > Maintenance > Tax > Tax Scales > STSL Scales**) are updated to include a new **Coefficient B** column. This is to prepare for changes to the formula used to calculate STSL tax rates, as proposed in the *Universities Accord (Cutting Student Debt by 20 Percent) Bill 2025*.



Please note that Micropay Evo 9.4 SP2 includes the layout changes only, it does not include updates to the STSL tax rates. Customers will be able to download an update to the tax scales in mid-September.

STSL Scale 01 **before** upgrade to MP9

Weekly Earnings	Coefficient A
1,078.99	0.0000
1,245.99	0.0100
1,320.99	0.0200
1,400.99	0.0250
1,484.99	0.0300
1,573.99	0.0350
1,667.99	0.0400
1,767.99	0.0450
1,873.99	0.0500

STSL Scale 01 **after** upgrade to MP9.4 SP2

Weekly Earnings	Coefficient A	Coefficient B
1,078.99	0.0000	\$0.0000
1,245.99	0.0100	\$0.0000
1,320.99	0.0200	\$0.0000
1,400.99	0.0250	\$0.0000
1,484.99	0.0300	\$0.0000
1,573.99	0.0350	\$0.0000
1,667.99	0.0400	\$0.0000
1,767.99	0.0450	\$0.0000
1,873.99	0.0500	\$0.0000

### STSL tax changes: More information

- The *Universities Accord (Cutting Student Debt by 20 Percent) Bill 2025* passed Parliament on 31 July 2025. The Bill proposes changes to the student loan repayment system, including changes to STSL tax scales.
- The formula used to calculate STSL tax rates did not previously require a Coefficient B value.
- Tax changes in MicrOpay are usually applied as part of End of Year processing, after all payroll processing for the year is complete. Applying a mid-year tax change is an unusual event. We are providing a separate update so that customers can manage when the updated STSL rates are applied, to fit in with their payroll process.
- We will notify customers when the STSL update is available.

ALL

### Access Evo

- **Updates to several dataviews for improved performance in Evo Dashboards**

- **New dataview added**

A new dataview, `_eivEvoAdditionsDeductions`, has been added to MicrOpay Evo. This dataview is based on `_eviAdditionsDeductions`, but has been written specifically to use with Access Evo, for better performance when loading data.

- **Updated dataviews**

The following dataviews have been re-written for better performance:

- `_ipvRBEmpTransCostingALL`
- `_ipvRBEmpSuper`
- `_eivEmpDetails`

- **Discrepancy between Access Evo EOY - YTD Payroll Report and MicrOpay Payroll Report addressed**

An issue with the `_eivEmpTransTotal` data view, which is used by the Access Evo *EOY - YTD Payroll Report* has been corrected.

## Utilities (inc. Integrated Backup and Restore)

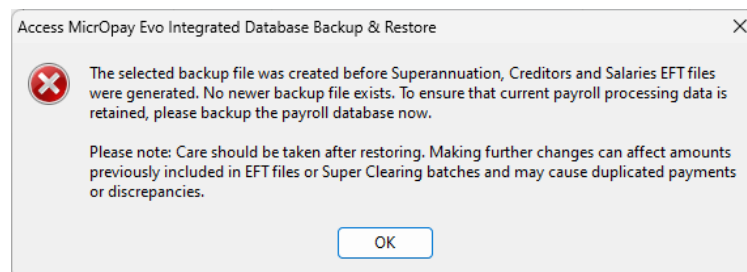
- **New warnings displayed when restoring Payroll Database**

New warning messages have been added to the Integrated Back and Restore process, to notify you when a restore will roll the payroll database back to a point before:

- Payment files (EFT/Creditor EFT Export files for Australian databases, or Generate Payments/Generate Creditor for New Zealand and Other databases) were generated
- Super Clearing batches (Australia) were submitted.

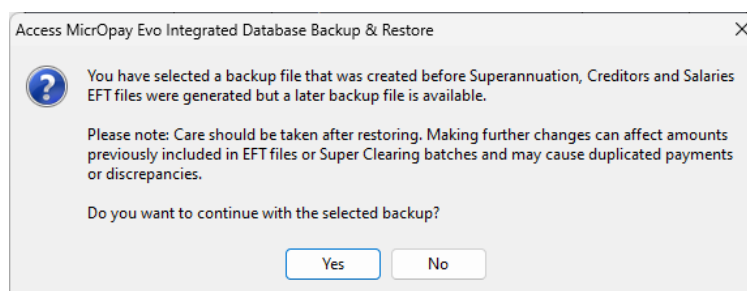
If payments have been processed by your bank, or Super batches have been processed by Beam, restoring then continuing to process before generating the EFT files/Super Batches again could result in duplicated payments or file discrepancies.

- The following message is displayed if:
  - Payment files were generated or Super Clearing batches were submitted, and
  - The restore will roll the payroll database back to a point before that, and
  - The payroll database has not been backed up since generating the payment file(s) or submitting the super batches.



Click **OK** to acknowledge and close the message then backup the payroll database. You will not be able to restore to the earlier backup until a more recent backup exists.

- The following message is displayed if:
  - Payment files were generated or Super Clearing batches were submitted, and
  - The restore will roll the payroll database back to a point before that, and
  - There is a more recent backup file available than the one selected.



Select **Yes** to continue with the older backup. To restore a different backup file or create a new backup, click **No** to cancel the current restore.

AU

## Transactions and Processing

### Processing a Back Pay transaction no longer includes zero Lump Sum E

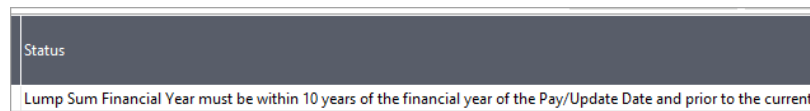
When a back pay, that has no Lump Sum E (LSE) component, is processed for the 2025/2026 year the transaction no longer includes a 0.00 LSE value. Previously, this caused a 0.00 LSE entry shown on the pay advice and IQ Reports. See also the next item under *STP2 Reporting*.

STP  
2

## STP Reporting

### • Issue that caused STP2 events to fail STP Gateway validation addressed

An issue that caused the following validation error in STP2 events is addressed:



This issue could occur when a back pay, that did not include a Lump Sum component, was processed for the 2025/2026 year. See also the related Transactions and Processing item, above.

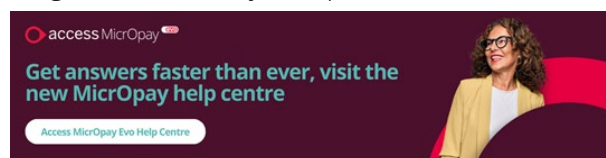
ALL

## General

### • The Access MicrOpay Digital Assistant and Help Centre are now in one place

Visit the new Access MicrOpay Help Centre [here](#).

The new Help Centre has smarter search and navigation, sleek user-friendly design, and quick access to resources. Read more about how to [Navigate the new Help Centre](#) and the [Digital Assistant](#) to get answers to your questions, faster.



NZ

## Pay Day Filing

### • Issue preventing Pay Day Filing grid from loading data resolved

The process that loads Employee Details data into Pay Day filing grid has been re-written. This resolves an issue where the process would halt at the message *Loading payday data* then eventually stop responding:

ALL

## Reports (Including Report Writer and IQs)

### • Updated dataviews

As per our *Access Evo* item (see page 5), the following dataviews were rewritten for better performance. This will also be reflected in custom reports and IQs that include them:

- `_ipvRBEmpTransCostingALL`
- `_ipvRBEmpSuper`
- `_eivEmpDetails`

Please note that there are no changes to the fields included in the views so there are no changes required to any custom reports that use them.

## After you upgrade

### For our Payroll Online customers

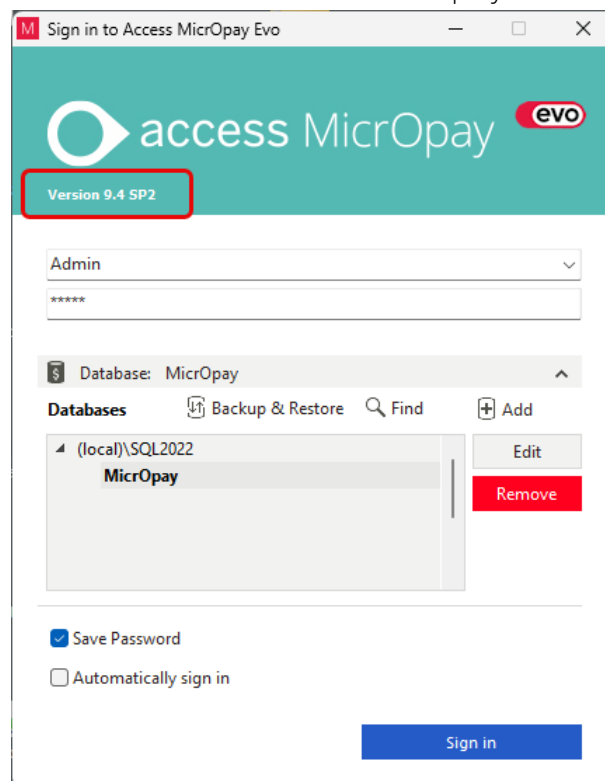
Please note that upgrade of MicrOpay Evo is managed as part of our service to you. You can disregard any comments or instructions that refer to downloading and installing software upgrades.

After the upgrade is installed, you should check that the correct software and database versions are displayed. If the latest version numbers are not displayed, MicrOpay Evo may not have been successfully upgraded.

### To check the MicrOpay Evo software version

In the sign in window:

- After the upgrade is installed the version number displayed should be **9.4 SP2**.



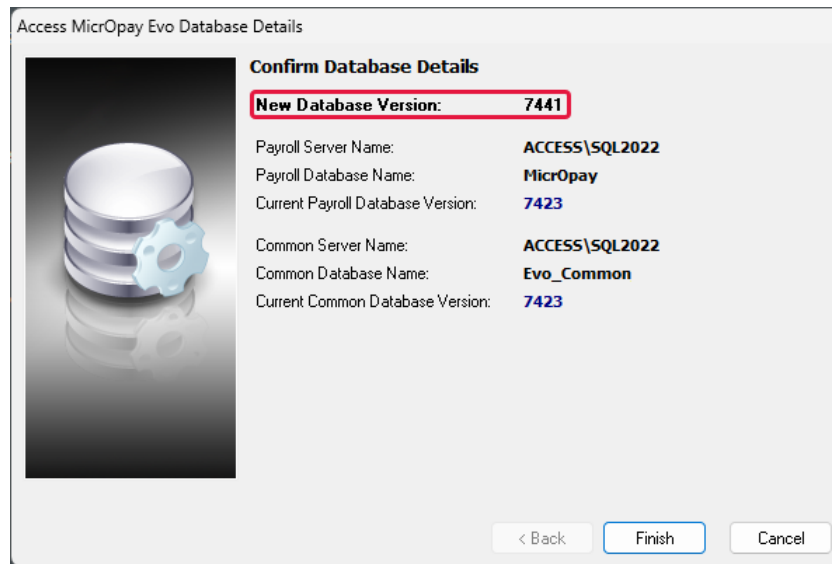
After you have signed in, you can check the version number by going to **Help > About**.



### ***To check the MicrOpay Evo database version***

Your new database version number after the upgrade should be **7441**.

The first time you log in to MicrOpay Evo after installing the upgrade, the payroll and common databases will be updated. You can check the new database version from the Confirm Database Details window.



Ensure you click **Finish** to proceed with the database update.