

# Release Notes

## MicrOpay Version 9.2 SP1 /MicrOpay ESP Version 9.0

### Contents

<b>Introduction</b> .....	<b>1</b>
<b>What's in the MicrOpay 9.2 SP1 release?</b> .....	<b>3</b>
<b>After you upgrade</b> .....	<b>13</b>

## Introduction

### MicrOpay

The highlights of this release include:






- Australian tax changes for the *2023/2024 Financial Year* (see page 3).
- *Update to SGL percentage* (see page 4) from 10.5% to 11% when Change Tax Year is run.
- *New STP Year To Date Report* (see page 7), to highlight differences between employee year to date STP reported values and their processed pay values.

For more information about these and other changes and fixes, refer to *What's in this MicrOpay release?* (see page 3)

### MicrOpay ESP

There are no functional or software changes for MicrOpay ESP in this release and, on this occasion, no MicrOpay ESP upgrade file to be installed. This means that after MicrOpay is upgraded, your MicrOpay and MicrOpay ESP software version numbers will be different.

Refer to *After you upgrade* (see page 13) to check the software and database version numbers for both products.

Key	
	The item applies to all country payroll databases.
	The item applies to Australian payroll databases.
	The item applies to New Zealand payroll databases.
	The item applies to Other country payroll databases.
	The item applies to a change for STP2. STP2 changes affect Australian payroll only.

### For our Payroll Online customers

Please note that installation and upgrade of MicrOpay and MicrOpay ESP are managed as part of our service to you. You can disregard any comments or instructions that refer to downloading and installing software upgrades.



Before updating your MicrOpay software, both the **Payroll** and the **Common** database **must** be backed up. More information about database backup is available in the Knowledge Base article:

*How do I Backup and Restore?.*

## What's in the MicrOpay 9.2 SP1 release?

AU

### Australian Tax Changes for 2023/2024



Please note that the listed tax changes are installed on upgrade to MicrOpay 9.2 SP1 but do not take effect until Change Tax Year is run to roll the payroll database over into the 2023/2024 tax year.

- **2023 Rate and Threshold Changes**

This release contains the following changes for the Australian 2023/2024 financial year. From 1 July 2023:

***In General Parameters > SGL***

- **SGL quarterly Contribution Cap**

The SGL quarterly **Contribution Cap** increases from \$60 220 to **\$62 270**.

***In Tax Parameters***

- **Component D ETP caps**

The **Initial Tax Free Value** increases from \$11 591 to **\$11 985**, and the **Annual Tax Free Value** increases from \$5797 to **\$5994**.

The ETP **Lower Cap Amount** increases from \$230 000 to **\$235 000**.

***In Tax Scales***

- **STSL Tax Scales 01 and 02 updated**

Updated rates are applied to the Study and Training Support Loan (STSL) Tax Scales 01 (Tax-Free Threshold Claimed) and 02 (No Tax-Free Threshold Claimed).

- **Super Guarantee percentage increases to 11%**

The statutory Super Guarantee percentage increases from 10.5% to 11% from 1 July 2023. When the tax year is changed in a MicrOpay version 9.2 SP1 database, the new Super Guarantee percentage value is applied to **Statutory Super Guarantee (%)** field in *Payroll > Maintenance > General > General Parameters > SGL Parameters*.



Please note that the **Statutory Super Guarantee (%)** field is not used by MicrOpay to determine SG eligibility or to calculate SG employer contributions. It is used by the *SGL Percentage Change* (see page 4) feature to create new 11% SG employer contributions and replace the existing 10.5% contributions linked to active employees.

## Other EOY Changes

- **SGL Percentage Change feature available in Change Tax Year window**

On upgrade to MicrOpay version 9.2 SP1, the **SGL Percentage Change** feature is displayed in *Payroll > Transactions > End of Year > Change Tax Year* so it can be used to automate creation of new 11% SG employer super contributions and attach them to active employees.

Some points about **SGL Percentage Change**:

- To use the feature, you must upgrade to 9.2 SP1 before running **Change Tax Year**.

- You can **Change Tax Year** without using **SGL Percentage Change**.

Untick the **Create** checkbox for each record in the SGL Percentage Change grid, before running **Change Tax Year**.

- If you don't use **SGL Percentage Change** when changing the tax year, you cannot use it later.
- Once MicrOpay is rolled over into the 2023/2024 financial year, **SGL Percentage Change** is again hidden in the **Change Tax Year** window.
- New, 11% SG employer contributions must be manually created and attached to employees, before payroll processing commences in the new year.



For more information about using **SGL Percentage Change**, refer to our Knowledge Base article:

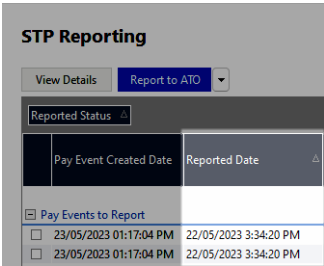
*How do I update the Compulsory Employer Superannuation Contribution Percentage?*

# STP Reporting

## Pay Events (including Pay Event Report)

### Pay Event Reported Date timestamp now reports time pay advices produced

The timestamp included in the Pay Event **Reported Date** column now displays the time that pay advices were produced, in the format *hh:mm:ss AM/PM*. Previously, this value defaulted to the **Advice Date** entered in the Pay Advice Report window and used the default time *12:00:00 AM*.



The **Reported Date** timestamp is based on the date and time the pay advices were produced.

When pay advices for the same payroll company, pay frequency and period end date are produced with the same **Advice Date** but in batches, e.g. at different times or on different days, the resulting pay event uses the latest date/time that pay advices were produced as the **Reported Date**.

### Employee Income Type now displayed in Pay Event Report

An employee's payment values in the Pay Event Report are now identified with the *Income Type* that they were reported against. When an employee has payments reported against more than one Income Type, values are grouped and displayed for each.

Values reported for one Income Type

5005	VALASCO, NADIA	Gross Taxable Total	9,692.34
		Tax (Incl Adjust)	2,065.00
		Net Pay	7,627.34
		Super Entitlement	10,710.07
		L - Super Liability (SG)	1,017.73
		O - Ordinary Time Earnings	9,692.34
		Income Type: SAW	
		PAYGW (Tax)	2,065.00
		Residual Gross (STP)	9,692.34

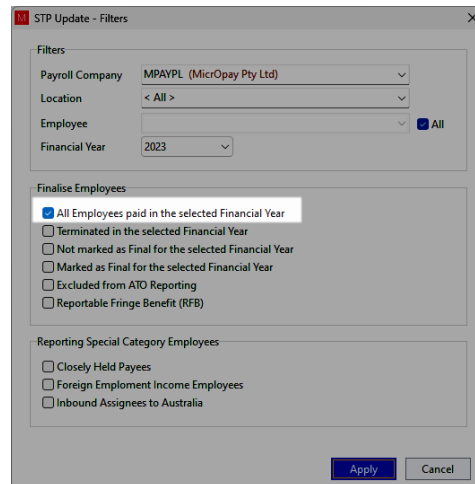
Values reported for two Income Types

N22	BENNETT, DOUGLAS	Gross Taxable Total	6,532.76
		Tax (Incl Adjust)	1,150.00
		Net Pay	5,382.76
		Super Entitlement	7,218.70
		L - Super Liability (SG)	685.94
		O - Ordinary Time Earnings	6,532.76
		Income Type: IAA (Argentina)	
		PAYGW (Tax)	313.00
		Residual Gross (STP)	962.19
		Income Type: SAW	
		PAYGW (Tax)	837.00
		Residual Gross (STP)	5,378.13
		Paid Leave	192.44
		O - Other Paid Leave	192.44

STP Update and STP Adjustment

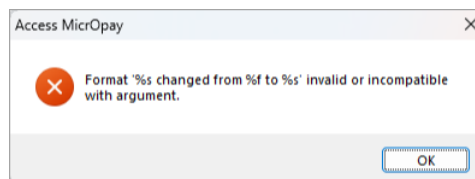
### STP Update All Employees filter option renamed

The **All Employees** filter option in STP Update filter window is renamed **All Employees paid in the selected Financial Year**.



### Previous year Deductions and Lump Sum A can now be zeroed out in STP Adjustment

STP Adjustment now allows Deductions and/or Lump Sum A values reported for a previous financial year to be zeroed out. Previously, the original values were reapplied when the adjusted employee values were saved. Also, the following error is no longer displayed when Lump Sum A values for a previous year are zeroed out:



### Code field length for Other Allowance Descriptions in Additions increased

*Other Allowance Descriptions* maintenance in the **STP Reporting** tab (STP Phase 2) of Additions now accepts allowance **Codes** up to 10 characters in length, previously Codes were limited to 5 characters. This enables set up of Other Allowance Descriptions that use longer codes than the standard list of STP2 Other Allowance Descriptions, e.g. for STP2 reporting of JobMaker Allowances.

## Reporting (including IQ reports)

### STP Year To Date Report

STP  
2

A new report, the *STP Year to Date Report* is added in this release. The purpose of the report is to highlight differences between employee STP YTD reported values and current YTD processed pay values, prior to finalising STP reporting for the year. When there is a discrepancy between the two value sets, it is recorded in the **Difference** column of the report.

When a **Difference** is recorded, for one or more employees, it could mean that there:

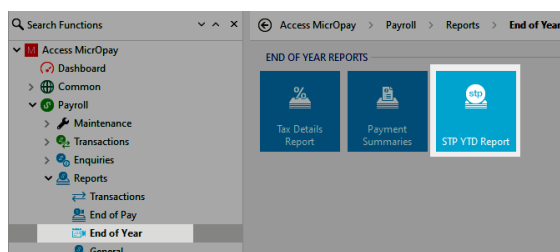
- Are unreported pay events from a previous pay period, so that processed pay values are higher than reported STP YTD reported values.
- Are unreported STP Update or STP Adjustments.
- Have been changes made to employee processed values, e.g. through Manual Calculation or Transaction Adjustment, that have not yet been captured in STP Reporting.
- Have been changes to STP2 Reporting configuration, e.g. the **STP Reporting Group** or **Subgroup** has been changed for a reportable component such as Addition or Leave Reason.

In the above cases, submitting an STP Update should resolve the Difference between the two. If Differences are still displayed after reporting an STP Update then re-running the report, it could indicate issues that require further investigation, prior to finalising STP reporting for the current year.



Submitting an STP Update to resolve differences between STP YTD reported and YTD processed values should not be combined with reporting employees' final event for the year. Finalising YTD values should occur in a separate Update, as part of your EOY processing.

To run the report, go to *Payroll > Reports > EOY* and select the **STP YTD Report** tile.



The report can be run for:

- One Pay Frequency at a time.
- One or more Payroll Companies and/or Locations at a time.
- Either one or all employees who match the selected report parameters

- A selected Financial Year.

On upgrade to MicrOpay 9.2 SP1, 2023 is the only Financial Year option. After the Tax Year is changed during EOY processing, the new financial year is added to the dropdown list.

- One or more Income Types.

The report organised by Payroll Company, with each Payroll Company starting on a new page. Each Payroll Company grouping displays results per employee.

For each employee, the report displays employee YTD totals for:

- employee Gross Taxable Total, Tax (Incl Adjust), Net Pay and Super Entitlement, e.g. SG liability or RESC.
- Then, by Income Type, a further breakdown of values by STP reportable payment types, e.g. by PAYGW, Gross (STP), Allowances, Paid Leave, ETPs, etc.,

The **Pay Event YTD** column displays YTD values reported via STP. The **Payroll YTD** column displays YTD processed pay values, e.g. similar to the values produced in the Payroll Report. The **Difference** column displays a value when there is a mismatch between both columns, otherwise it displays 0.00.

The **OTE Value** column displays the total value processed for pay components that are configured with the **Ordinary Time Earnings** (OTE) checkbox ticked.



## STP Year to Date Report MicrOpay Pty Ltd

STP Year to Date Report    Financial Year: 2023    Pay Frequency: 1W01 - Weekly    Page 1 of 8

STP2 Pay Event Reporting Groups		Pay Event	Payroll	Difference
Pay Component		YTD	YTD	OTE Value
<b>Payroll Company: MPAYPL - MicrOpay Pty Ltd</b>				
<b>Employee: MATTHEW UNDERWOOD (A05)</b>		Location: KINGSTON		
<b>Gross Taxable Total</b>		<b>6,730.78</b>	<b>7,692.32</b>	<b>-961.54</b>
	Gross Taxable Total		7,692.32	
<b>Tax(Incl Adjust)</b>		<b>1,036.00</b>	<b>1,184.00</b>	<b>-148.00</b>
	Tax (Incl Adjust)		1,184.00	
<b>Net Pay</b>		<b>6,044.78</b>	<b>6,908.32</b>	<b>-863.54</b>
	Net Pay		6,908.32	
<b>Super Entitlement: L - Super Liability (SG)</b>		<b>706.72</b>	<b>807.68</b>	<b>-100.96</b>
	Superannuation - Employer Contribution		807.68	
<b>Income Type: SAW</b>				
<b>PAYGW</b>		<b>1,036.00</b>	<b>1,184.00</b>	<b>-148.00</b>
	Tax		1,184.00	
<b>Gross (STP)</b>		<b>6,730.78</b>	<b>7,692.32</b>	<b>-961.54</b>
	Normal - Normal Pay		7,692.32	
<b>Allowance Items:</b>				
<b>CD - Cents per Kilometre</b>		<b>350.00</b>	<b>400.00</b>	<b>-50.00</b>
	AA07 - CAR ALLOWANCE		400.00	
<b>Ordinary Time Earnings (OTE)</b>		<b>6,730.78</b>	<b>7,692.32</b>	<b>-961.54</b>
<b>Employee: KULESH SHARMA (A06)</b>				
		Location: KINGSTON		
<b>Gross Taxable Total</b>		<b>6,730.78</b>	<b>7,692.32</b>	<b>-961.54</b>
	Gross Taxable Total		7,692.32	
<b>Tax(Incl Adjust)</b>		<b>1,036.00</b>	<b>1,184.00</b>	<b>-148.00</b>
	Tax (Incl Adjust)		1,184.00	



For more information about using **STP Year to Date Report**, refer to our Knowledge Base article:

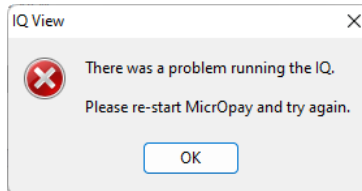
*Access MicrOpay: STP Year to Date Report*

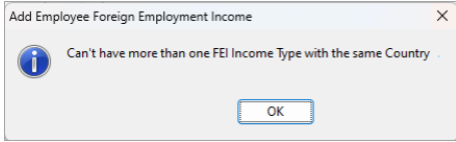
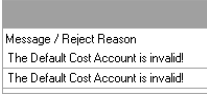
## IQ Reports


ALL

### Payroll Company field size increased for Payroll Employee Transaction Variance IQ Report results

The **Payroll Company** field in the IQ report, *IQB-EMP010 - Payroll Employee Transaction Variance* has been increased to 213 characters. This corrects an issue that caused the following error to be displayed when long payroll company names were included in the IQ results.



	Employee Maintenance (including Implement HR Changes)
	Employee Record
<b>STP 2</b>	<p><b>An FEI or IAA Country can only be used once for employees with multiple FEI or IAA Income Types</b></p> <p>For employees with either FEI or IAA Income Type records (employee <i>Tax Details &gt; STP Summary and Foreign Income</i>), the same <b>Country</b> cannot be used more than once. If a <b>Country</b> used in an existing Income Type record and it is selected again when adding or editing another Income Type record of the same type, the following message is now displayed.</p> 
	Implement HR Changes (Implement eHR) from ESS or external systems
<b>ALL</b>	<p><b>Error when implementing employee changes after editing employee Default Cost Account resolved</b></p> <p>This release resolves an issue that:</p> <ul style="list-style-type: none"> <li>Caused the error <i>The Default Cost Account is invalid!</i> when implementing employee default cost account changes</li> </ul>  <ul style="list-style-type: none"> <li>Could also clear the default cost account from the employee record.</li> </ul> <p>This could happen when:</p> <ul style="list-style-type: none"> <li>A different default cost was selected from the <b>Default Cost Account</b> dropdown field in the <i>Edit eHR Details</i> screen before changes were implemented; and</li> <li>The <b>Lookup Field</b> option for the <b>Default Cost Account</b> dropdown was set to order by cost account Code.</li> </ul>

	<h2>Enquiries</h2>
<p><b>STP 2</b></p>	<p>The Transaction tab in <i>Payroll &gt; Enquiries &gt; Employee Enquiries</i> now displays the <b>STP Reporting Group</b> and <b>STP Reporting Subgroup</b> for processed <i>Other Leave</i> and <i>User Defined Leave</i>. Previously, <b>STP Reporting Group</b> and <b>Subgroup</b> were only populated for these leave types in the Enquiries Leave History tab.</p> <p> <b>STP Reporting Group</b> and <b>STP Reporting Subgroup</b> columns are not displayed in the Transactions tab grid by default. You can add them by right-clicking anywhere on the grid to display the <i>Customise Grid Columns</i> list then dragging the column name from the list onto the grid header, or onto the grey area above the grid header to group data.</p>

	<h2>Transactions and Processing</h2>
<p><b>AU</b></p>	<p><b>Error message behaviour when entering Paid Family and Domestic Violence Leave corrected</b></p> <p>The following issues related to error messages displayed in the Paid Family &amp; Domestic Violence Leave (PFDVL) are resolved:</p> <ul style="list-style-type: none"> <li>Clearing the contents of the <b>Employee</b> field in the Paid Family and Domestic Violence Leave window no longer causes the <i>Employee not found</i> message to be displayed.</li> </ul> <div data-bbox="775 1234 1002 1393" data-label="Image"> </div> <ul style="list-style-type: none"> <li>Deleting a PFDVL entry for an employee then entering a new one using the same Leave Date no longer causes the error <i>Leave Date already in use...</i> to be displayed.</li> </ul> <div data-bbox="606 1498 1174 1657" data-label="Image"> </div>

	General Ledger Integration
ALL	<p><b>Correct costing split applied to Leave Based on Hours Worked values when Leave Liability batch is processed</b></p> <p>An issue that prevented costing split from being applied to Leave Based on Hours Worked values from is addressed in this release.</p> <p>Leave costs for leave based on hours worked now split correctly in Leave Liability batches when:</p> <ul style="list-style-type: none"><li>• The Leave Class is configured to cost split; and</li><li>• Update Leave Entitlements was run prior to producing Pay advices.</li></ul>

## After you upgrade

### For our Payroll Online customers

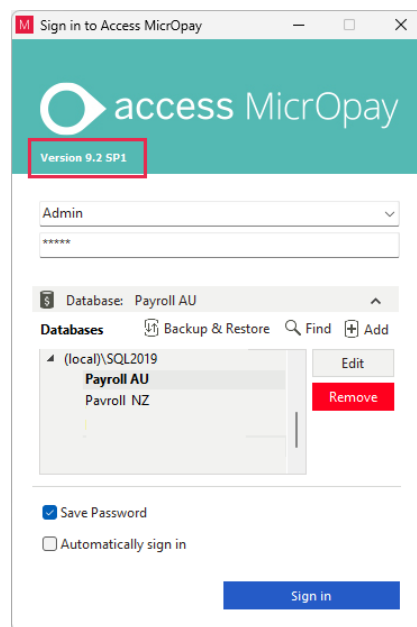
Please note that installation and upgrade of MicrOpay and MicrOpay ESP are managed as part of our service to you. You can disregard any comments or instructions that refer to downloading and installing software upgrades.

After the upgrade is installed, you should check that the correct software and database versions are displayed. If the latest version numbers are not displayed, MicrOpay may not have been successfully upgraded.

### To check the version of MicrOpay

After the upgrade is installed the version number displayed should be **9.2 SP1**.

The version number is displayed on the MicrOpay login window.

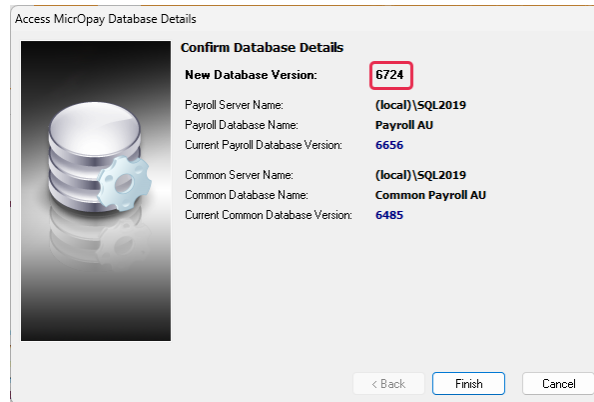


After you have signed in, you can check the version number by going to **Help > About**.

### To check the Micropay database version

Your new database version number after the upgrade should be **6724**.

The first time you log in to Micropay after installing the upgrade, the payroll and common databases will be updated. You can check the new database version from the Confirm Database Details window.



Ensure you click **Finish** to proceed with the database update.

### To check the Micropay ESP version

Please note that because there is no Micropay ESP upgrade for this release, your Micropay and Micropay ESP software versions will be different after Micropay is upgraded to 9.2 SP1.

Your Micropay ESP software version will not change. For example, if your Micropay ESP software version was **Micropay ESP 9.0 (SW6280)** before Micropay was upgraded, it will be the same afterwards.

The database version number refers to the payroll database version, so will be updated to **DB6724**.

